

ABOUT US

We are an education intervention project based in Stalybridge, Tameside. We offer learners the opportunity to study vocational courses, catch up with their literacy & numeracy and engage with our Lifeskills Challenge programmes.

Education is the kindling of a flame, not the filling of a vessel.

- Socrates

Our aim is to fan the flames of learning and place young people on the pathway to success.



2024-25 BROCHURE

Byrom Mill, Knowl Street,
Stalybridge, SK15 3AW
t: 0161 536 6135

CONTACT US

Paul Riley (Director/Finance)
t: 07515 554417
e: paul.riley@striveacademy.org.uk

Alec Dean (Director/SENDco)
t: 07850 984968
e: alec.dean@striveacademy.org.uk



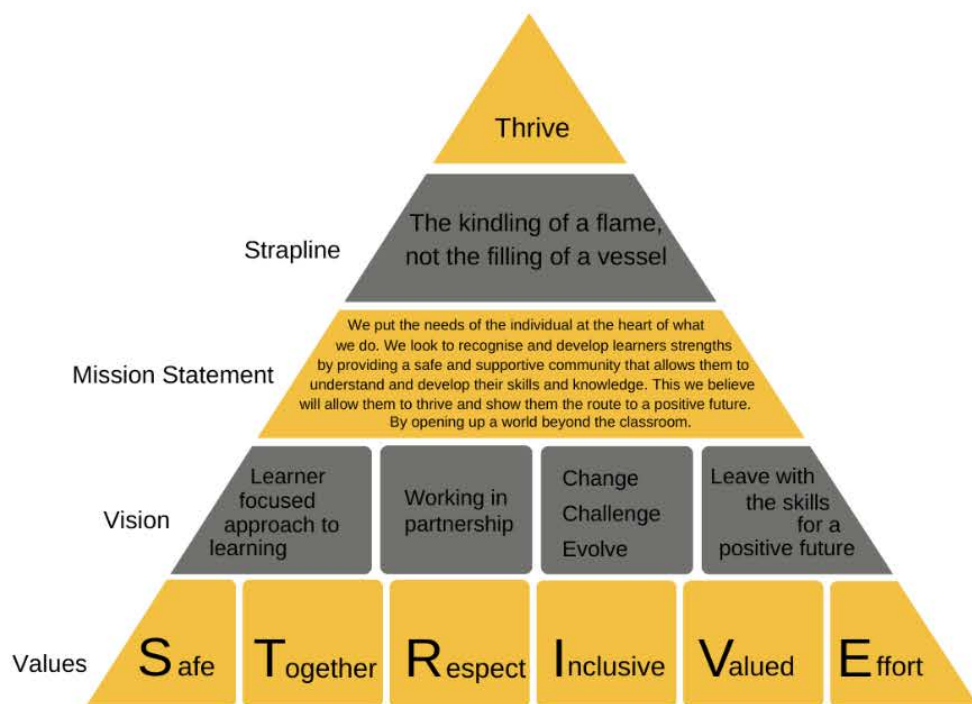
STRIVE >> THRIVE



WHAT WE DO

Are you working with 11-18 year old learners who need a vocational supplement or alternative offer to your usual curriculum in order to keep them engaged and motivated?

If so, the vocational courses and support offered by Strive Academy could be the answer to improved learner attendance, engagement, and outcomes.



WHO WE ARE

Our managing directors have over 30 years' experience within leadership roles in both the special educational needs sector and mainstream secondary settings. Through experience, we have learnt that vulnerable and difficult to engage learners can thrive best in alternative education settings that reflect their learning styles. We believe in a multiple literacies model where learners can shine through, demonstrating skills that are not encompassed in traditional learning settings.





VOCATIONAL PROGRAMMES



CONSTRUCTION

This area has been designed and created by industry professionals in collaboration with our SENDCo to ensure it is both functional for our learners and aesthetically pleasing. We believe considering these factors carefully can have a huge impact on learner engagement and positive outcomes.



WHAT WE OFFER

We offer a Level 1 construction multi-skills qualification at either Award, Certificate or Diploma.

The qualification covers:

- Carpentry
- Bricklaying
- Painting & Decorating
- Plastering
- Health & Safety

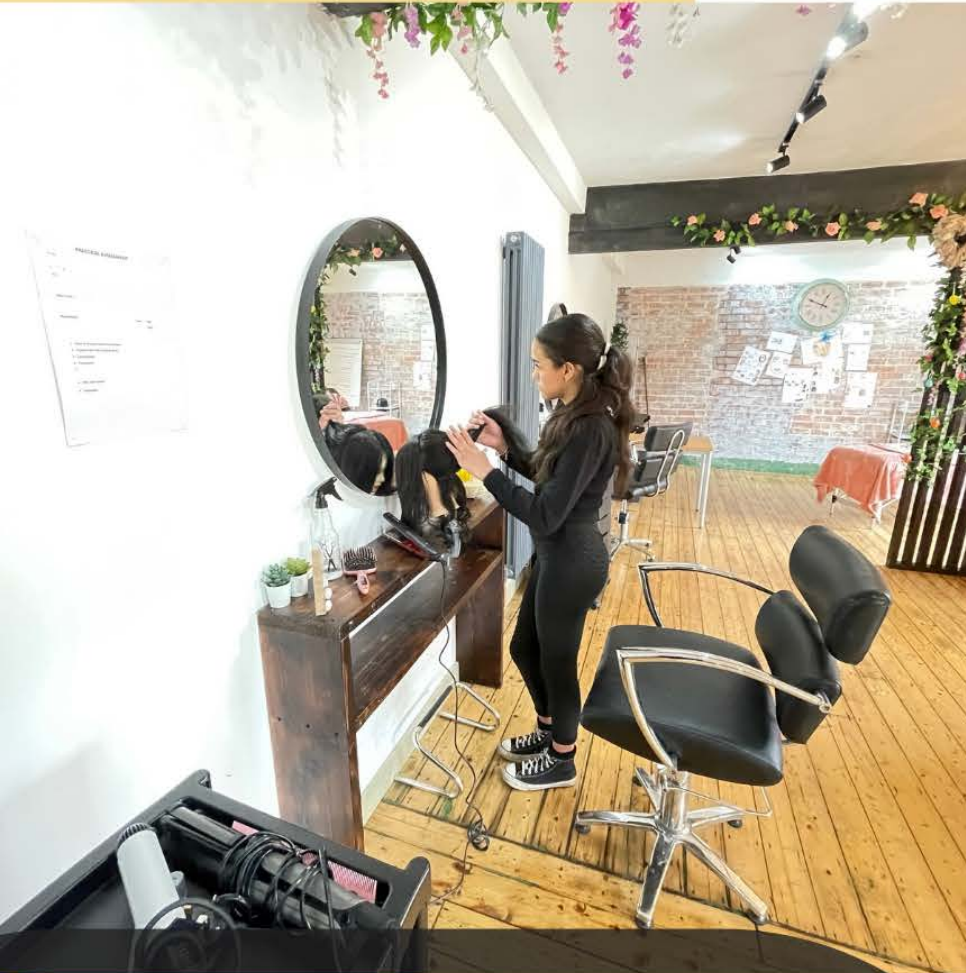


Our Level 1 construction qualification is with Highfields awarding body, meaning that it is compliant with gaining a CSCS card (needed to start work in the industry)





VOCATIONAL PROGRAMMES



BARBERING, HAIR & BEAUTY

Inspired by our friends at Blackwell Education, we have created a sleek and exciting space for our learners to be creative and thrive within. Utilising industry standard equipment and products, Learners are prepared for the experience of working in a 'real-world' setting.



WHAT WE OFFER

Areas that our qualifications can cover are:

- Barbering and men's facial hair
- Hairdressing
- Nail Art
- Make-Up
- Health and Safety
- Creating a look based upon a theme

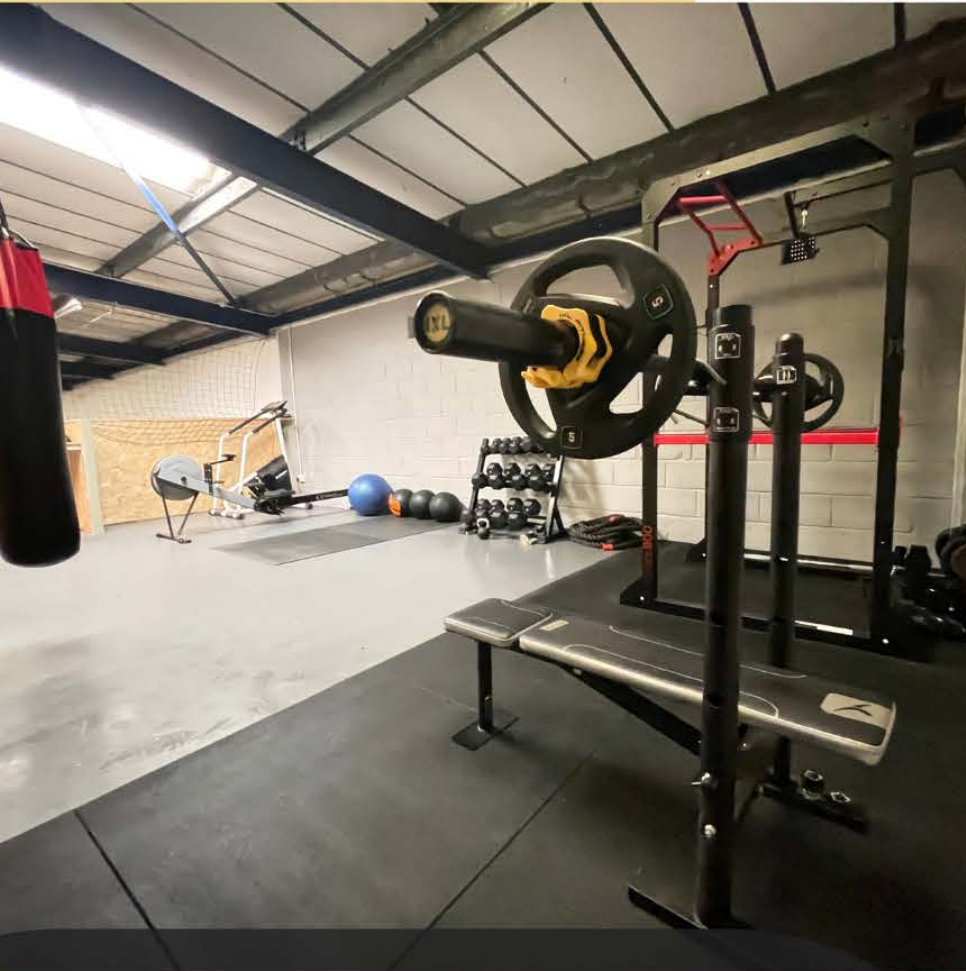


Our qualifications are accredited by VTCT, we offer Level 1 and Level 2 qualifications at Award, Certificate, Extended Certificate and Diploma.





VOCATIONAL PROGRAMMES



SPORT & FITNESS

With our sport and fitness area we are able to equip our learners with the knowledge and skills to ensure they can make healthy lifestyle choices now and throughout their lives. We also look to develop physical and mental prowess in a sporting area of their choice whilst attaining a fully accredited sport-based qualification produced by the YMCA.



WHAT WE OFFER

While we utilise our on-site facilities our tutors are also keen to expose our learners to as many different sports and games as possible which is why we conduct many off-site activities such as:

- Cycling (BMX & Track)
- Water Sports (canoeing, rafting, etc)
- Athletics
- Tennis
- Badminton
- 5-a-side
- Basketball
- Gymnastics
- Dance



Our qualifications are accredited by YMCA. Learners can study towards achieving a Level 1 Award, Certificate or Diploma or can be part of our low-pressure engagement programme.





VOCATIONAL PROGRAMMES



MUSIC PRODUCTION

Our music production course allows young people to either build upon current knowledge or explore this exciting area for the first time.



WHAT WE OFFER

Learners will study music production using our brand-new state-of-the-art music studio. This is an opportunity to experience music for the first time or develop current knowledge.

The course includes:

- Using technology to create tracks
- Instrument playing
- Vocal production & development
- Understanding musical theory
- Purpose-built performance space
- High spec equipment
- Industry experienced tutors



Learners will be enrolled on a Level 1 accredited qualification from the NCFE.





VOCATIONAL PROGRAMMES



HEALTH & SOCIAL CARE

New for 2024, this course is aimed at learners who wish to develop an understanding of these settings before deciding whether working in the sector is for them



WHAT WE OFFER

In small groups and nurture setting learners will gain the knowledge, understanding and skills required for employment and/or career progression in the sectors. This course also allows learners to tailor their learning to their interests through the provision of a broad range of optional units and provides opportunities for the development of transferrable skills.

We also support progression to Level 2 qualifications in health, social care or children's settings and provide learners with the opportunity to progress to employment, in due course, in a range of job roles



Learners will be enrolled on a Level 1 accredited qualification from the NCFE.





VOCATIONAL PROGRAMMES



TRAVEL & TOURISM

This QCF qualification provides an in-depth insight into travel and tourism, allowing learners to develop knowledge and understanding of key concepts such as customer service, problem-solving and careers in the industry. It is designed for those who would like to progress onto further study within the travel and tourism sector.



WHAT WE OFFER

This Level 1 certificate aims to:

- provide learners with an understanding of the principles of the travel and tourism industry and allow them to explore the various avenues of work within this industry
- allow learners to gain transferrable skills that can be applied to further study or obtain employment.

The objectives of this qualification are to help learners to:

- gain an understanding of the principles of the travel and tourism industry
- understand and develop the skills and knowledge necessary for learners to progress onto a Level 2 qualification in travel and tourism or related qualifications.



Learners will be enrolled on a Level 1 accredited qualification from the NCFE.





TUTORING PROGRAMME



FUNCTIONAL SKILLS LITERACY AND NUMERACY

All our courses offer additional maths and English support through our BKSb platform which can be accessed anywhere that has a device connected to the internet. GCSE support can also be offered depending on the learners' needs.



WHAT WE OFFER

Alongside our online offer we also provide CGP work books, exam practice books and revision cards at every functional skills level optimising each learners chance of success. Once our tutors assess a learner has reached a certain level they will be entered for the functional skills exam at our centre meaning that the learner can have quick outcomes throughout the academic year.





OUTREACH PROGRAMMES



Strive Academy offers support in the community for learners struggling to engage with school settings. This comes as both academic and SEMH support depending on needs.



TAILORED ACADEMIC TUTORING

English and maths academic 1:1 tutoring delivered by qualified tutors to functional skills qualification. Delivered either at home or in community settings.

SEMH/LIFE SKILLS SUPPORT

1:1 support to increase self-esteem through positive activities, emotional literacy coaching and life skills qualifications.

Can run along side academic tutoring to provide a support package.

IN SCHOOL CATCH- UP SUPPORT

English and maths academic 1:1 tutoring delivered by qualified tutors to functional skills qualification.

Delivered within school settings.





MENTORING PATHWAY



The intention of this process is to facilitate and document the progress of a child into full time education in circumstances such as exclusion, school refusal, persistent absence or extended absence.

The process should be documented and evidenced to allow sharing of information, sharing of best practice, quality assurance and review of student progress with all stakeholders.

All plans within the Mentoring. Pathway should be in consultation with the student, parent or carer and other relevant professionals.

Targets for transition from each wave should be SMART – Specific, Measurable, Attainable, Realistic and Time-Bound. When a student meets or exceeds all essential targets they should move to the next wave of transition once agreed. Where these are not met, new paperwork with revised targets and support should be completed.

Whilst no set time is provided for the length of each wave, it is preferred that these have a limit with a review in place to evaluate on a set basis except in exceptional circumstances. All contact with the learner by staff as part of the Mentoring Pathway must be recorded on the visit log and included in the student's plan.





WAVES



SEMH issues able to be supported by school pastoral team

SEMH issues improved to allow positive learning interactions with peers in informal educational setting

SEMH issues improved to allow learning interactions with trusted adult in education setting

Learning behaviours reinitiated with trusted adult

Relationship built with trusted adult. Engagement built through interests and enrichment activities

School Reintegration

WAVE 1

Strive academy group sessions in vocational area of choice

WAVE 2

Strive Academy 1:1 sessions functional skills and life skills

WAVE 3

Community engagement in enrichment activities plus community functional skills sessions

WAVE 4

Community engagement in enrichment activities

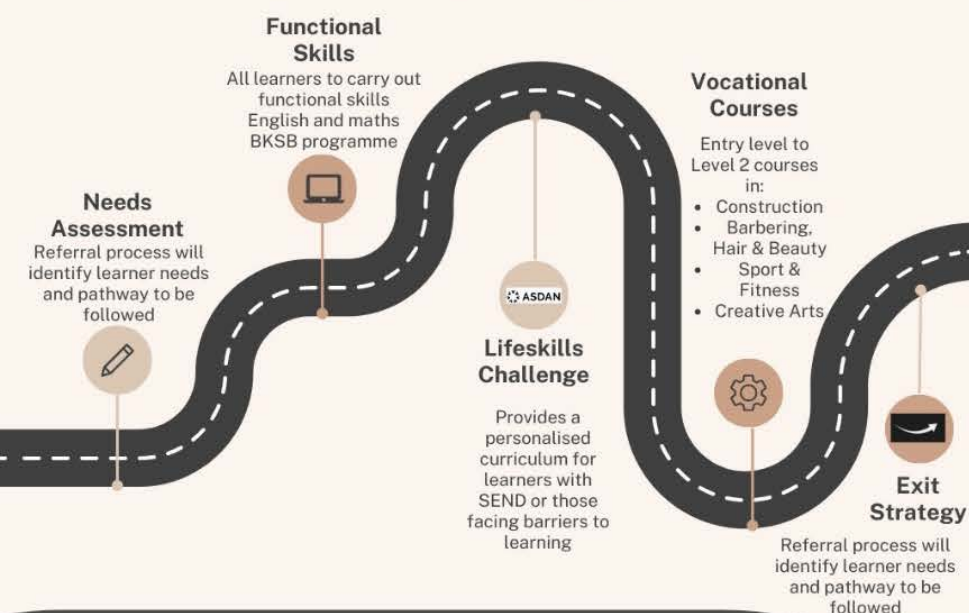




POST-16 PATHWAY



Post-16 Pathway



We can offer a post-16 pathway for those learners who for whatever reason cannot access mainstream Further Education or work and training programmes.

The programme comprises of; functional skills English and maths supported by our BKSBS platform, Lifeskills Challenge Programme, and vocational training in one of the areas listed previously.

For learners not able to access group vocational activities we can offer an individualised programme to support their needs.





FAQS



How much will it cost?

On-site Day Placements (Vocational and Connect Programmes)

All vocational programmes have a set rate of £130 (pre-16) and £180 (post-16) per day, per learner.

This is for learners who can work in groups of up to eight with two supporting adults.

On-site programmes have group sizes no greater than 8 students.

For learners who need higher levels of support - add-on costs will be discussed at the point of referral.

Outreach and Mentoring Pathway

Full-day (10am-2pm) 1:1 tutor support is charged at £230 per day, per learner.

What are the travel arrangements?

Those on 1:1 programmes will be transported by their tutor/mentor.

Learners attending the centre will usually have transport arranged by their primary educational setting, however, at an additional agreed cost we can provide a taxi service.

What qualifications/accreditations do you offer?

Construction/music and digital arts – Entry level to Level 2 NCFE qualifications (all on the RQF) at award (60 GLH), certificate (130 GLH) or diploma (240 GLH).

Barbering hair and beauty – VTCT qualification (on RQF) at entry level to Level 2 at award (60 GLH), certificate (130 GLH) or diploma (240 GLH).

Sports & Fitness - entry-level - Level 1 YMCA awards (all on RQF) award (60 GLH)

There is an option to complete two awards.

Functional Skills – NCFE at entry level to Level 2

Connect Programme – Qualification in Personal Wellbeing – entry level to Level 2 (on the RQF) at award (60 GLH)

ASDAN Lifeskills challenge and short courses

As an accredited ASDAN centre we can offer over 18,000 accredited units in lifeskills and 20+ short courses in both vocational and engagement activities.



FAQS



What are your safeguarding arrangements?

We operate safer recruitment processes and keep a Single Central Record. We work within the Keeping Children Safe In Education guidelines and report all issues to referring school/LA securely using a note of concern. All staff are DBS checked and trained at the appropriate level in safeguarding with ongoing updates through meetings and further training. We provide a safeguarding letter of assurance in-line with DfE guidance.

What are your attendance procedures?

Learners who do not attend - we will contact referring school 30mins after their start time. If a pattern of non-attendance arises we will contact school or referring organisation to set up a meeting to discuss barriers to attendance.

When are you open?

Learners' education time is 10am-2pm Monday – Friday. Strive Academy's term times are located on our website www.striveacademy.org.uk and follow Tameside's secondary term dates.

We are open in the holidays for holiday vocational programmes at request. All invoices will cover these dates irrespective of whether the parent school follows the same dates.

How are you quality assured?

We are on the approved provider lists for Trafford, Stockport and Manchester and Greater Manchester Combined Local Authority.

We have adopted the new quality assurance framework from integratED and conform as closely as possible to the Independent School Standards.

The qualification boards we use quality assure through External Verification visits and moderation. We have an Internal Verification process overseen by a qualified assessor.

We welcome any QA processes that schools or LAs have developed to ensure their learners get the quality educational experience they deserve.

How do we contact you?

You can contact the main office on 0161 536 6135 or email:
referrals@striveacademy.org.uk
finance@striveacademy.org.uk
paul.riley@striveacademy.org.uk (general questions)

